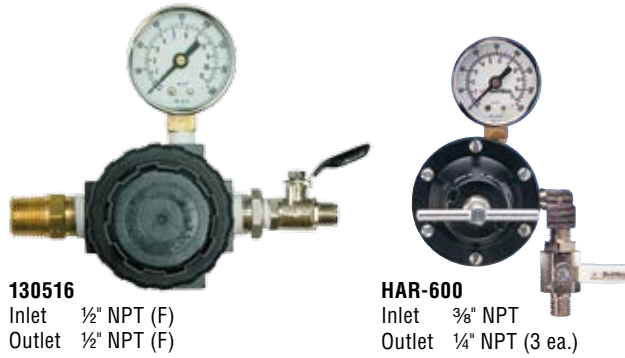




# Air Regulator with Gauge and Valve

Order No. <b>130516</b>	Model No. <b>130516</b>
Order No. <b>130093</b>	Model No. <b>HAR-600</b>

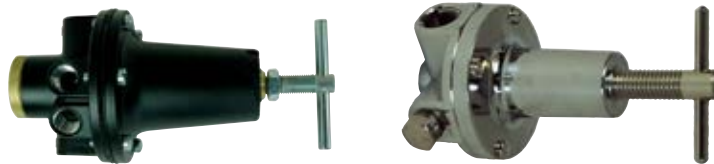


**130516**  
Inlet 1/2" NPT (F)  
Outlet 1/2" NPT (F)

**HAR-600**  
Inlet 3/8" NPT  
Outlet 1/4" NPT (3 ea.)

# Air Regulator

Order No. <b>192242</b>	Model No. <b>HAR-511</b>
Order No. <b>130100</b>	Model No. <b>HAR-520</b>



**HAR-511**  
Inlet 3/8" NPT (F)  
Outlet 1/4" NPT (F)

**HAR-520**  
Inlet 3/8" NPT (F)  
Outlet 1/4" NPT (F)

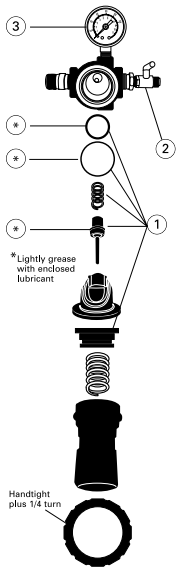
## Air Regulators

Order No. Model No.	Description
<b>130516</b>	75 CFM air regulator, gauge and valve (regulator available separately as 130521)
<b>130093 HAR-600</b>	60 CFM air regulator, gauge and valve (regulator available separately as HAR-507)
<b>192242 HAR-511</b>	60 CFM air regulator — Flow through regulator for pressure tanks
<b>130100 HAR-520</b>	50 CFM air regulator - non-relieving (purchase GA-375 gauge separately)

## For Precise Control of Air Delivery

Refer to Service Bulletins SI-6-18-10 and SB-6-147 and Part Sheet 77-2781

### 130516

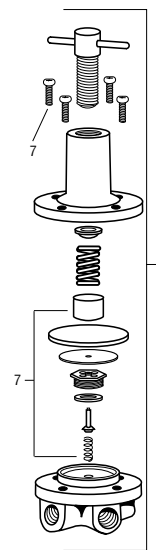


Ref. No.	Model No.	Description	Ind. Parts Req.
1	130521	Regulator Kit	1
2	VA-594	Shut-off Valve	1
3	GA-288	Gauge	1

\* Lightly grease with enclosed lubricant

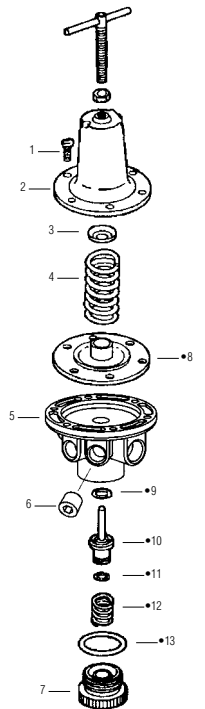
Handtight plus 1/4 turn

### 130100 (HAR-520)



Ref. No.	Model No.	Description	Ind. Parts Req.
1	HAR-520	Regulator Kit	1
7	KK-5088	Repair Kit	1

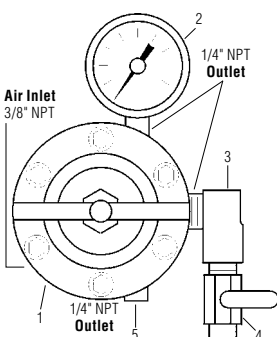
### 192242 (HAR-511)



Ref. No.	Model No.	Description	Ind. Parts Req.
1	—	#10-32x9/16 Fillister Hd. Screw	6
2	HAR-14	Cover	1
3	—	Spring Button	1
4	—	Diaphragm Spring	1
5	—	Body	1
6	—	Pipe Plug 1/4" NPT(M)	1
7	—	Bottom Plug	1
●8	—	Diaphragm Assy.	1
●9	—	O-Ring	1
●10	—	Valve	1
●11	—	O-Ring	1
●12	—	Spring	1
●13	—	O-Ring	1

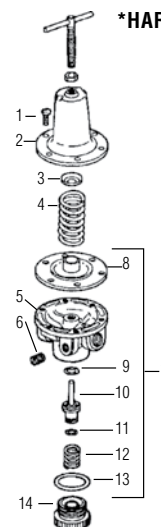
● Available only as part of KK-4977 Repair Kit; order separately.

### 130093 (HAR-600)



Ref. No.	Model No.	Description	Ind. Parts Req.
1	HAR-507*	Regulator	1
2	GA-288	Gauge	1
3	—	1/4" NPT Street Elbow	1
4	VA-542	Ball Valve	1
5	—	1.4" NPT Plug	1

### \*HAR-507 Regulator



Ref. No.	Model No.	Description	Ind. Parts Req.
1	—	#10-32x9/16 Fillister Hd. Screw	6
2	HAR-14	Cover	1
3	—	Spring Button	1
4	—	Diaphragm Spring	1
5	—	Body	1
6	—	Pipe Plug 1/4" NPT(M)	1
7	KK-4977	Repair Kit (incl. # 8-13)	1
8	—	Diaphragm Assy	1
9	—	O-Ring	1
10	—	Valve	1
11	—	O-Ring	1
12	—	Spring	1
13	—	O-Ring	1
14	—	Bottom Plug	1